



**SuperSystems**  
incorporated



# eFlo 2.0

## ELECTRONIC GAS FLOW METER

### OPERATIONS MANUAL

Super Systems Inc.  
7205 Edington Drive  
Cincinnati, OH 45249  
513-772-0060  
Fax: 513-772-9466  
[www.supersystems.com](http://www.supersystems.com)

**Super Systems Inc.**

USA Office

*Corporate Headquarters:*

7205 Edington Drive

*Shipping Address:*

7245 Edington Drive

Cincinnati, OH 45249

Phone: (513) 772-0060

<http://www.supersystems.com>

**Super Systems Europe**

Unit E, Tyburn Trading Estate,

Ashold Farm Road, Birmingham

B24 9QG

UNITED KINGDOM

Phone: +44 (0) 121 306 5180

<http://www.supersystemseurope.com>

**Super Systems México**

Sistemas Superiores Integrales S de RL de CV

Acceso IV No. 31 Int. H Parque Industrial

Benito Juarez

C.P. 76120 Querétaro, Qro.

Phone: +52 442 210 2459

<http://www.supersystems.com.mx>

**Super Systems China**

No. 369 XianXia Road

Room 703

Shanghai, CHINA

200336

Phone: +86 21 5206 5701/2

<http://www.supersystems.cn>

**Super Systems India Pvt. Ltd.**

A-26 Mezzanine Floor, FIEE Complex,

Okhla Indl. Area, Phase – 2







New Delhi, India 110 020

Phone: +91 11 41050097

<http://www.supersystemsindia.com>

## Table of Contents

Introduction.....	5
Model Numbers.....	5
Safety Information.....	6
Specifications.....	6
Installation Procedure.....	7
Mechanical Installation .....	7
Clearance.....	7
Mounting .....	7
Plumbing.....	7
Thread Sealants:.....	7
Connection Tightness: .....	8
Leak Checking .....	8
Electrical Connections .....	9
Initial Network Configuration .....	9
nLocateIP Method .....	9
Modbus Registers .....	12
Connecting to Ethernet/IP in Studio 5000.....	13
Keypad Operating Procedure.....	20
Keypad Basic Functions .....	20
View Totalized Flow .....	21
Reset Totalized Flow .....	21
Switch between Auto and Manual Modes.....	21
Adjust Flow Rate (Manual Mode Only).....	21
Display Setpoint.....	21
Adjust Setpoint.....	21
Deviation Alarm .....	21
Enter Menu .....	22
Keypad Setup Menu System.....	22
Setup Menu Keypad Functions .....	22
Exiting the Menu System .....	24
Menu System Details.....	24
Touchscreen Operating Procedure.....	27
Touchscreen Basic Functions .....	28
View Active Alarms .....	28

View Totalized Flow .....	28
Reset Totalized Flow .....	28
Switch between Auto and Manual Modes .....	29
Adjust Flow Rate (Manual Mode Only) .....	29
Adjust Setpoint.....	29
Settings Menu .....	30
Instrument Information & Diagnostics Menu.....	30
 Basic Configuration Menu .....	31
 Basic Configuration - Flow Alarm Menu.....	31
 Network Configuration - Serial Communications Menu .....	32
 Network Configuration - Ethernet Communications Menu .....	32
 Instrument Configuration - Gas Menu.....	33
 Instrument Configuration – Addition Options Menu.....	33
Maintenance.....	34
Web Interface .....	35
Using the Web Interface .....	35
Main Screen .....	36
Instrument Information .....	36
Diagnostics .....	37
Basic Configuration .....	37
Instrument Configuration .....	39
Read/Write Registers .....	41
Network Configuration .....	41
Alarms.....	43
Warranty.....	44
Revision History .....	45
Appendix 1: Menu Option Tables.....	46
Appendix 2: Verification Procedures.....	47
Calibration Verification.....	47
Sensor Accuracy Verification .....	47
Appendix 3: Startup Procedures.....	48
Appendix 4 – Additional Visuals and Diagrams.....	48

## Introduction

The **eFlo** 2.0 instrument is Super Systems Inc.'s latest electronic flow meter. eFlo works by measuring the differential pressure (the difference in pressure of a gas at two points) of a gas flowing through a specially designed opening in the gas flow assembly. Based on properties of the flowed gas, the differential pressure can then be used to calculate the flow rate of the gas.

eFlo 2.0 uses a mathematical curve to calculate the flow of a gas and features built-in diagnostic information, flow rate, pressure alarms, and a flow rate totalizer. The automatic meter can be set to automatic or manual valve control mode. Automatic valve control mode allows the eFlo to use a flow rate or valve position setpoint as a basis for adjusting the valve (and thus the gas flow) using a built-in valve motor. The setpoint can be programmed manually by the user or obtained by the instrument from a 4-20 mA analog signal or a digital signal over RS485. Manual valve control mode allows the user to manually set the valve position through the interface.

eFlo 2.0 is built for use in harsh industrial environments.

This manual also covers configuration and control using the eFlo web interface.

## Model Numbers

eFlo 2.0 model numbers provide details about your eFlo device's interface type, valve type, and gas type. This is useful information to have available when contacting SSI for technical support.

### Interface Type

KP= Keypad Interface  
TS=Touchscreen Interface

### Valve Type

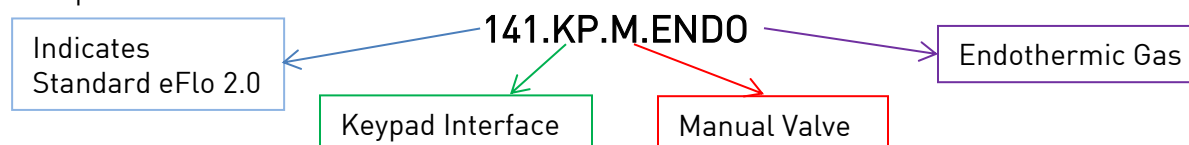
A=Automatic Valve  
M=Manual Valve

### Gas Type

AIR – Air  
ARG – Argon  
C3H8 – Propane  
CH4 – Methane  
CO2 – Carbon Dioxide  
CRS – Coarse (AutoGen Special)  
DA – Disassociated Ammonia  
ENDO – Endothermic Gas

H2 – Hydrogen  
MULT – Multiple Gasses  
N2 – Nitrogen  
N2O – Nitrous Oxide  
NAT – Natural Gas  
NH3 – Ammonia  
PROY – Propylene Gas (C3H6)  
TRM – Trim (AutoGen Special)

Example:



Safety Information

Observe the following safety requirements when configuring, operating, servicing, or maintaining the eFlo instrumentation. If the device is used in a manner not specified in this manual, protection provided by the equipment may be impaired.

**WARNING!**

The eFlo instrument is NOT guaranteed to provide gas shutoff, nor is it designed to do so. For reliable gas shutoff, incorporate a valve that provides positive gas shutoff. Ensure that all gas flow equipment is in compliance with National Fire Protection Agency (NFPA) requirements, including those found in NFPA 86. Failure to follow these requirements could result in flammable gas leaks into the unit.

Ensure that the air and gas mixture ratio settings are within the specifications provided in this manual. Exceeding specified values could result in hazardous conditions.

**Specifications**

The specifications for the eFlo instrument are as follows.

Weight	10.4 lbs (4.76kg)
Power Required	24 VDC @ 750 mA
Enclosure Rating	IP10
Accuracy	4% of Full Scale
Repeatability	2%
Turndown Ratio	10:1
Medium Temperature Limits	-10°F to 125°F (-20°C to 51°C)
Ambient Temperature Limits	-10°F to 125°F (-20°C to 51°C)
Maximum Altitude	N/A
Flow Output Signal (Linear)	4-20 mA
Maximum Output Signal Load	500Ω
Input Control Signal (Linear)	4-20 mA
Communications	RS485, Ethernet, Ethernet/IP, USB
Communication Protocol	Modbus RTU
Flow Meter Pressure Limits	2 psig sensors: <ul style="list-style-type: none"> <li>• 2 psig usable limit</li> <li>• 4 psig overpressure limit</li> </ul> 5 psig sensors: <ul style="list-style-type: none"> <li>• 5 psig usable limit</li> <li>• 10 psig overpressure limit</li> </ul>
<i>The installed sensors will be determined by SSI based on pressure specifications &amp; turndown requirements.</i>  <i>See the Calibration Report included with your product for more details.</i>	

Table 1 - eFlo Specifications

### Installation Procedure

Installing the eFlo unit consists of a mechanical installation and an electrical installation. The mechanical installation includes mounting as well as inlet and outlet piping. The eFlo unit will be assembled prior to shipment. Before beginning installation:

- Ensure that all fittings and connections are tightly secured prior to beginning installation.
- Ensure that all expected components are present. Contact SSi at (513) 772-0060 if you have questions.

### Mechanical Installation

#### **Clearance**

When installing the device, leave enough room on either side (3" is recommended) to allow users to adjust, remove and replace the existing fittings. Also ensure that the device is installed in a location that allows for easy access to the power connection.

#### **Mounting**

Proper mounting is essential for the successful operation of the eFlo instrument. Please use the mounting template (included in Appendix 4 or available at [www.supersystems.com/eflo/](http://www.supersystems.com/eflo/)) to ensure accuracy.

The eFlo can be supported by pipe without using the bolt holes if desired. However, if mounting in this manner, ensure that the pipe is rigid enough to support the weight of the meter.

When installing the device, the shutoff valve or blocking solenoid should ideally be located before the meter.

#### **Plumbing**

The inlet/outlet openings measure 1.25" NPT. Use of bushings or reducers at these connections is acceptable as long as the smallest pipe diameter is not smaller than the installed orifice plate. See certification for that meter to determine actual orifice diameter. Contact SSi at (513) 772-0060 for questions about pipe sizing.

With the meter upright, the inlet (High Pressure) side is at the bottom of the meter and the outlet (Low Pressure) side is at the top of the meter with the valve plug. Flow is from High to low pressure or bottom to top.

#### **Thread Sealants:**

Teflon or natural gas-rated pipe tape or pipe dope is acceptable for non-corrosive gases. For corrosive gases, pipe tape is not recommended, unless the manufacturer specifies that it is rated for gas(es) being flowed through the meter.

NOTE: When installing the device, ensure that excessive tape or dope does not fall into the meter, as this can damage sensors, plug sensor lines, prevent flow through the meter, and prevent the device from functioning properly.

**Connection Tightness:**

After thread sealant is applied, tighten all connections by hand (3.5-6 turns, depending on pipe size), then use the following Turn Past Finger Tightness guide to complete the tightening process:

NPT Fitting Size	TPFT (Turns Past Finger Tightness)
1/8"	1.5-2.5
1/4"	1.5-2.5
3/8"	1.5-2.5
1/2"	1.5-2.5
3/4"	1.5-2.5
1"	1-2.5
1 1/4"	1-2.5
1 1/2"	1-2.5
2"	1-2.5

Table 2- TPFT Guide

NOTE: Never loosen a fitting for correct alignment. Doing so will prevent the thread from maintaining a proper seal.

CAUTION: Do not overtighten the connection. Overtightening can damage threads, pipes, fittings, and the eFlo device.

**Leak Checking**

Before operation, all plumbed components should be leak checked. To avoid damage to sensors and other components, review the Certificate of Calibration Overpressure Limit or check with SSI for the maximum pressure for the sensor in your eFlo device (the installed sensor may vary based on the parameters needed in your particular application).

**IMPORTANT!**

Ensure that the inlet pressure is within specified parameters for your eFlo unit.



## Electrical Connections

The eFlo meter requires a 10-pin connector and cable for power and communications. The eFlo is supplied with a 20 ft cable. The wires are color-coded per the table below. Contact SSI if a different size cable is required. Cables are available in 7', 20' and 50' lengths.

Wire-In Color	Signal Type	Description
Red	+ VDC	Power Supply (24 VDC @ 750mA)
Black	- VDC	
Green / Black Stripe	+ RS485	Communications Signal Provided by Modbus Over Serial
Red / Black Stripe	- RS485	
White / Black Stripe	RLY	Normally Open Relay Contact (24 VDC)
Orange / Black Stripe	RLY	
Orange	+ mA	Analog Out - Output Flow Signal (4 - 20 mA)
Blue	- mA	
Green	+ mA	Analog In - Input Setpoint Signal (4 - 20 mA)
White	- mA	

Table 3 - Electrical Connections

## Initial Network Configuration

This section is intended for use by persons familiar with Ethernet network setup.

In order to work correctly, the eFlo unit must be properly configured for the network to which it is connected.

**NOTE:** By default, the IP address of the eFlo unit is static, and Dynamic Host Configuration Protocol (DHCP) is disabled. These settings can be adjusted through SSI's *nLocateIP* software (see below), the web interface ([Using the Web Interface](#)), or through the eFlo keypad or touchscreen.

If you already know the IP address of the web interface, skip to the [Using the Web Interface](#) section.

The eFlo unit will use a default IP address of 192.168.1.200. If the unit is using the default IP address, that IP address can be used to access the web interface (for more information on the web interface, refer to the [Using the Web Interface](#) section).

The IP address of the unit can also be found by using SSI's *nLocateIP* software. This method is described in the following subsection.

### nLocateIP Method

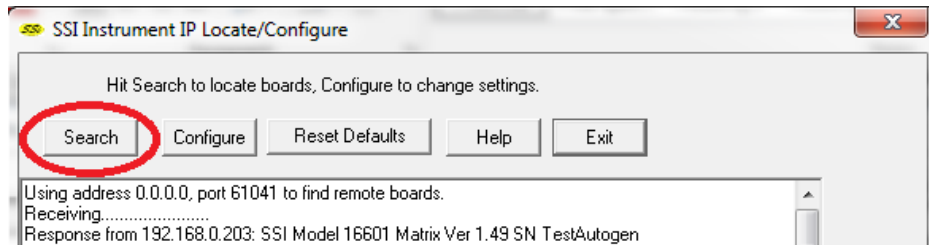
Once the unit is connected to the network, you should be able to locate it using SSI's *nLocateIP* software. This program is available from SSI. To use it in locating the unit on the network, follow these steps on a Windows-based PC:

1. Ensure that the unit is connected to the network.

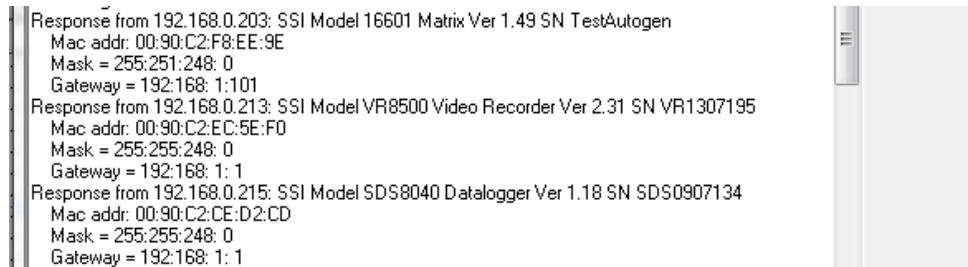
2. Open the *nLocateIP* program



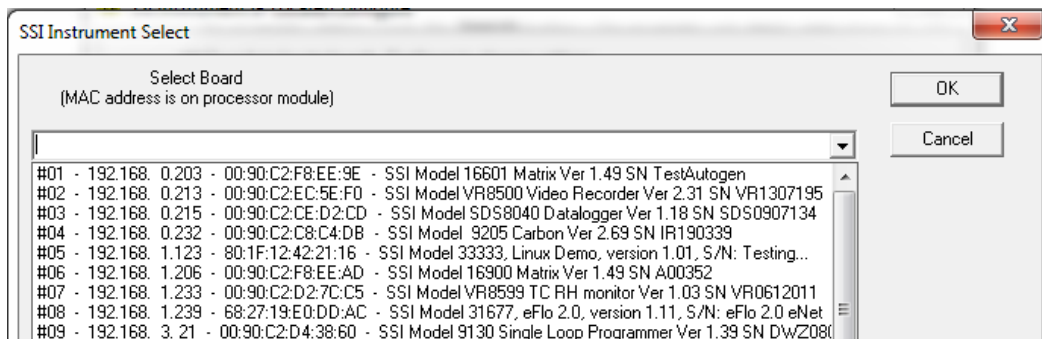
3. Once the program opens, click the **Search** button. The program will begin searching for SSI devices connected to the network.



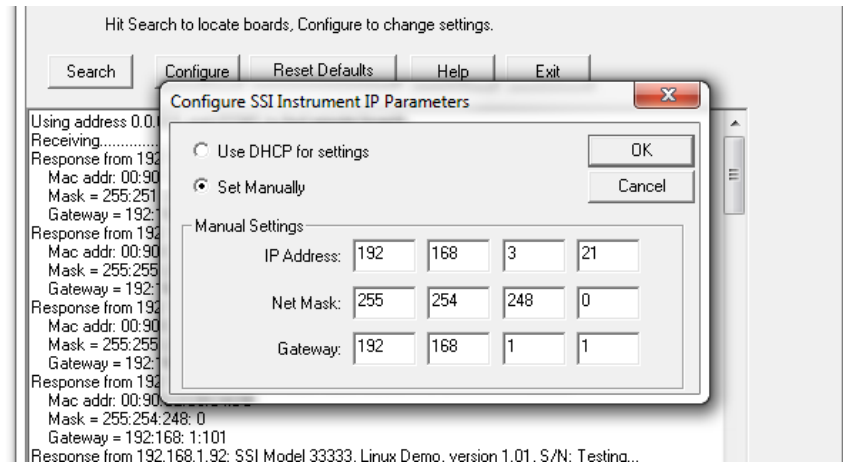
4. Look for identifying text in the list of instruments. It includes the type of instrument and serial number. It also provides the IP Address information for the meter.



5. Click the **Configure** button and choose the meter to change its IP Address settings.



6. Click on the device description to highlight it and click the **OK** button. This will display the device's IP settings, which can be changed to match the network to which it's connected.



The meter's IP Address settings will be changed immediately to allow it to communicate. If you are unable to find the unit in the list of devices, it is possible that a network setting (such as subnet mask) may be different, the unit may be connected to a different network, or the unit may not be powered on. SSi recommends consulting an IT engineer or network administrator. If needed, call SSi at (513) 772-0060.

## Modbus Registers

The eFlo Modbus registers are as follows.

Modbus Register Number	Description
16	Actual Flow
17	Flow Sensor mA Input Value
18	Flow Setpoint
19	Decimal Place for Display of Flow and Setpoint
20	Instrument Modbus Address
21	Not Used
22	Inlet Pressure
23	Differential Pressure
24	Gas Temperature
25	Valve Position
26	Not Used
27	Not Used
28	Air Flow
29	Not Used
30	Deviation Alarm Setpoint
31	Low Pressure Alarm Setpoint
32	Low Flow Alarm Setpoint
33	High Flow Alarm Setpoint
34	Alarm byte
35	Auto [1] / Manual [0] for Control
36	Not Used
37	Reset Totalizer Values to Zero
38	Not Used
39	Totalizer Units (0 to 9999)
40	Totalizer in 10,000s (0 to 9999 -> 0 to 99,990,000)
41	Totalizer in 10,000,000s (0 to 9999 -> 0 to 999,900,000,000)

Table 4 - Modbus Registers and Descriptions

### IMPORTANT!

See Appendix 3 for recommended startup procedures involving Zero Tare, Max Tare, and Altitude Adjustment. Following these procedures will provide optimal accuracy and control.

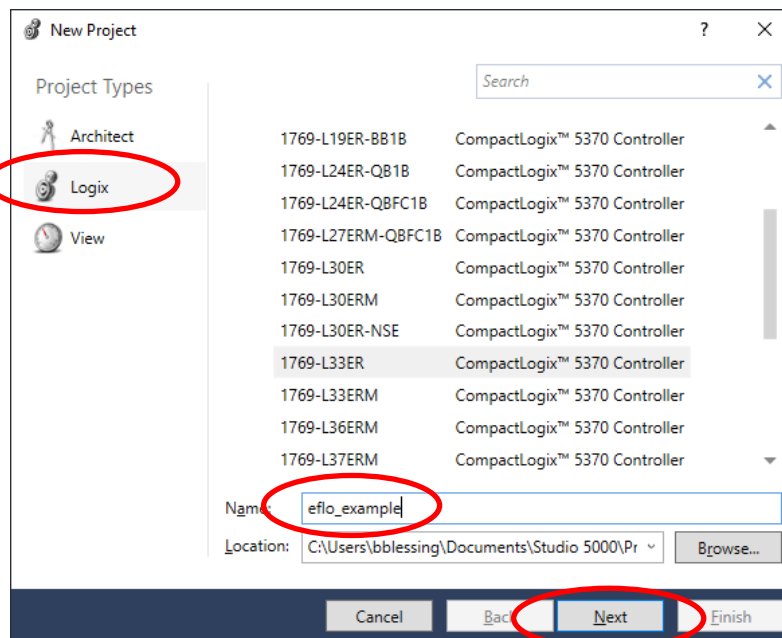
## Connecting to Ethernet/IP in Studio 5000

1. Open Studio 5000.
2. On the startup page, select *New Project*.



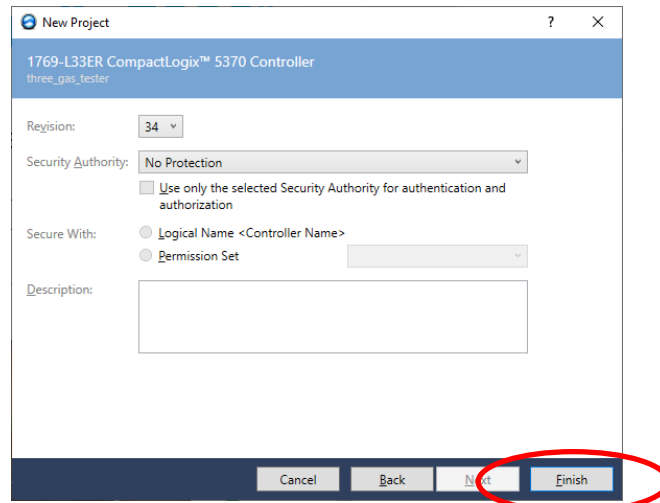
Startup page

3. Select *Logix* for Project Type and select the appropriate controller. In the example below, this is 1769-L33ER (Allen Bradley Compact Logix L33ER). Enter a meaningful project name as shown, then click *Next*.



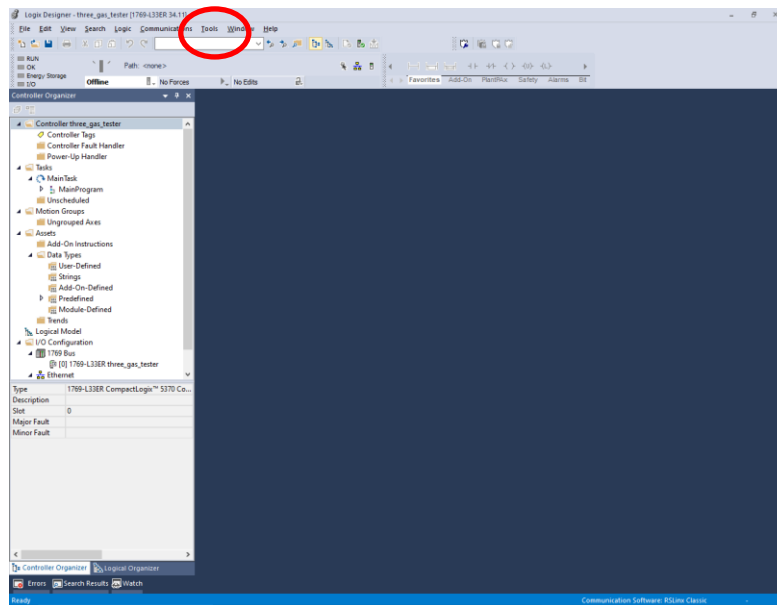
New Project Page

- No changes are necessary on the next screen. Click *Finish* to continue.

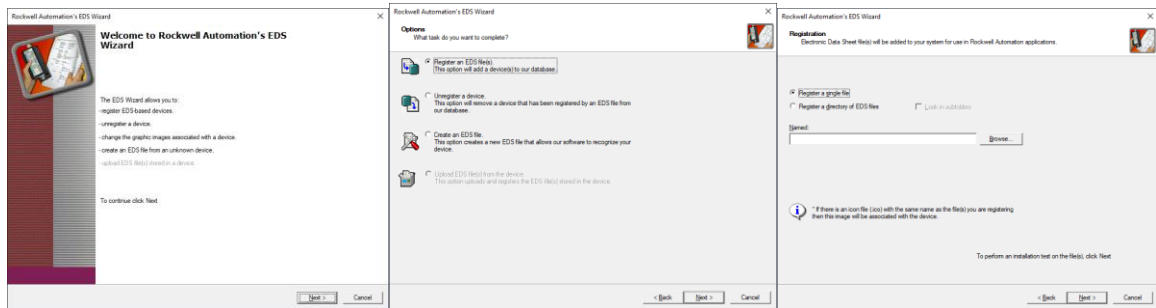


No changes necessary

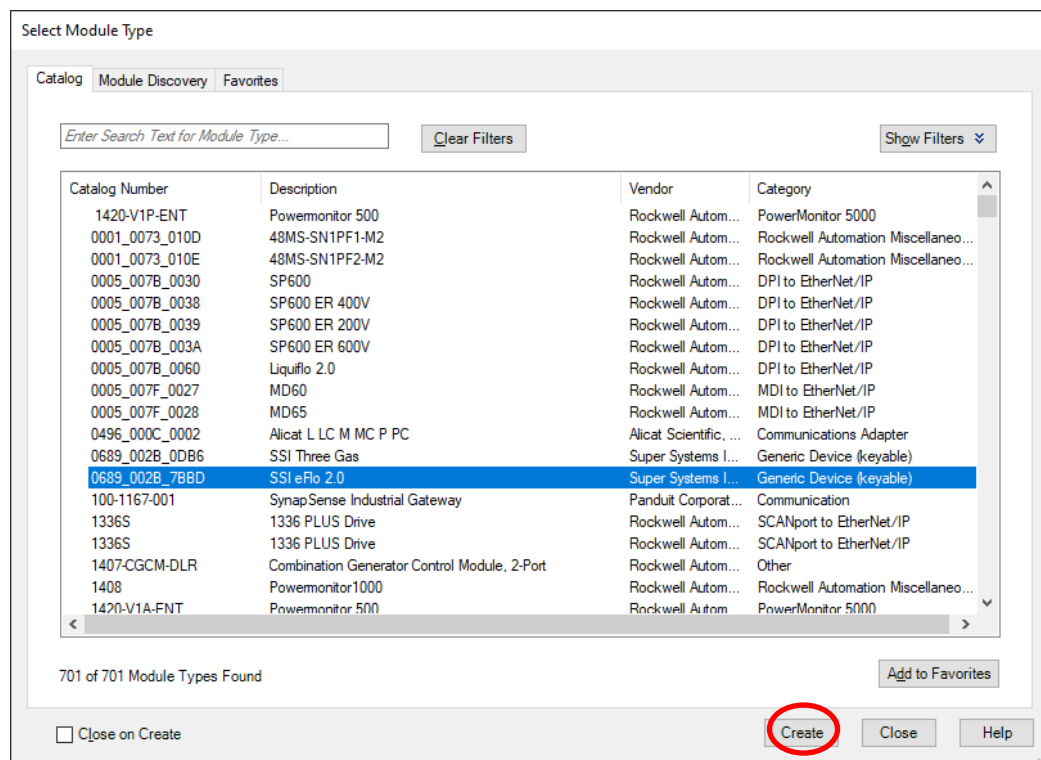
- On the screen that follows, load your EDS.
- If necessary, use EZ EDS to edit the EDS. It may be helpful to also use Textpad if copying from other EDS files.
- Select Tools->EDS Hardware Installation Tool.



8. Select *Register an EDS file*. Then *Register a single file*, browsing to select your file. There are no changes necessary on the screens that follow. Click *Next* to advance through these screens, and then click *Finish* on the final screen.



9. Under I/O configuration under the Controller Organizer, right-click *Ethernet* and click *New Module*. If your EDS is correct it will appear in the list (in the example below it is the highlighted SSI eFlo 2.0 EDS). Select it and click *Create*.



## Selecting Module

10. Type in a meaningful name and set the IP address. This identifies the device that the PLC will be talking to. If appropriate, also click *Change* and set the input/output data to 16-bit integers.

**New Module**

General

Type: SSI eFlo 2.0  
 Vendor: Super Systems Inc.  
 Parent: Local  
 Name: EfloEIP  
 Description:

Ethernet Address  
☒ Private Network: 192.168.1.239  
☐ IP Address:  
☐ Host Name:

Module Definition  
 Revision: 1.001  
 Electronic Keying: Compatible Module  
 Connections: Exclusive Owner  
 Change ...

Status: Creating

OK Cancel Help

New Module Screen

**Module Definition**

Revision: 3 002

Electronic Keying: Compatible Module

Connections:

Name	Input:	Size
Exclusive Owner	10	SINT
	Output: 2	

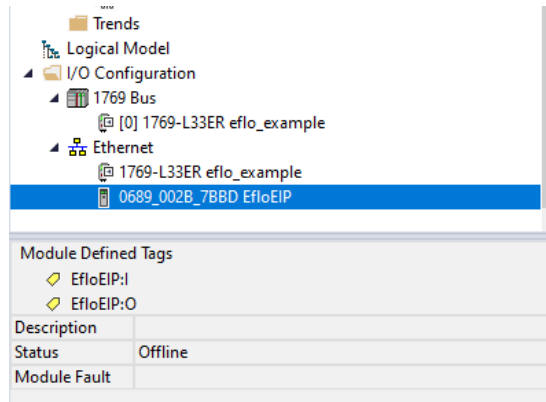
SINT  
INT

OK Cancel Help

Setting module definition

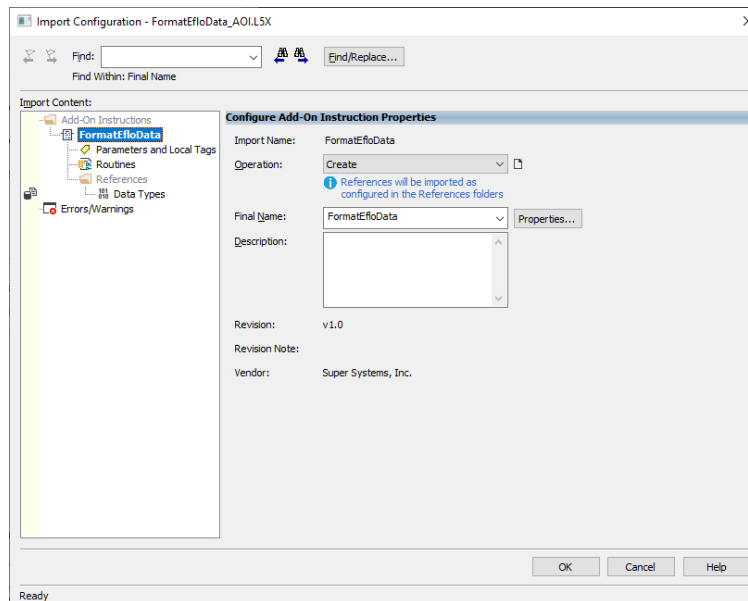


11. No changes are necessary on the screens that follow. Click *OK* as needed to proceed through the options. Finally, click *Close* and ensure that the new module is present.




**New module is present**

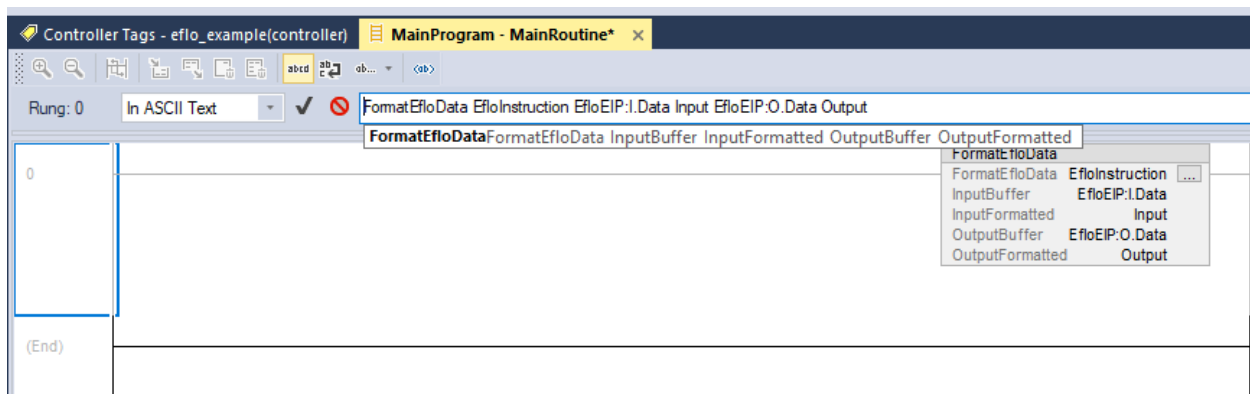
12. Click *File -> Import Component -> Add-On Instruction* and browse to select "FormatEfloData" then click *OK* on the following screen.
13. Under *Controller Organizer -> Assets -> Data Types -> User-Defined* check for two items: "EfloInputData" and "EfloOutputData". Check also for "FormatEfloData" under "Add-on Instructions" directly above.



14. Double click *Controller Tags* under *Controller eflo\_example*. There should be two tags: *EfloEIP:O* and *EfloEIP:I*. These represent the output and input data from the Ethernet/IP connection, and are simple SINT arrays.
15. Create three new tags called "Input", "Output", and "EfloFormatter" with corresponding data types *EfloInputData*, *EfloOutputData*, and *FormatEfloData*.

Name	Alias For	Base Tag	Data Type
▸ EfloEIP:O			_0689:002B_7BBD_E771E08B:O:0
▸ EfloEIP:I			_0689:002B_7BBD_8B91252D:I:0
▸ Input			EfloInputData
▸ Output			EfloOutputData
▸ EfloFormatter			FormatEfloData
			

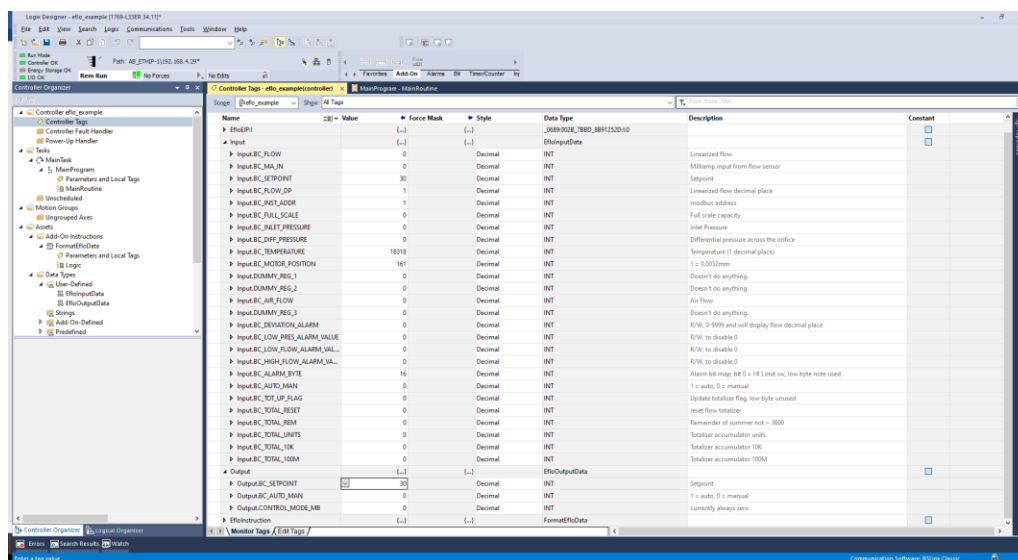
16. Click *Controller Organizer* -> *Tasks* -> *Main Task* -> *Main Program* -> *Main Routine* and double click *Main Routine*. Rung 0 will have already been created. Double click it and type in the command shown below. This will copy the controller input data from the EfloEIP:I.Data array into the new, much better formatted user-defined type Input. At the same time, the Output array is being copied to the EfloEIP:O.Data array. Note that these default controller tags are named after the New Module above: EfloEIP.



17. Click *Communications*-> *Who Active*. Find the desired PLC, select it, and click *Download*. This loads the PLC with the project and starts the communication process with the device to test. Click *Download* again and click through the ensuing screens.

## eFlo 2.0 Electronic Flow Meter Operations Manual

18. Once complete, and assuming no errors, view the configuration/input/output data by double-clicking *Controller Tags* and then switching over to “Monitor Tags” at the bottom as shown below.



## Keypad Operating Procedure

The eFlo system is equipped with a pressure and flow rate alarm (high and low), flow rate totalizer, and integrated valve control. The unit can be operated in either manual or automatic mode for flow rate control. This section of the manual provides an explanation of the basic menu navigation through the keypad as well as how the unit operates including: valve control modes, flow limit control, flow alarming, flow totalizing, and programming of the unit.

The figure on the following page shows the layout of the flow control panel on the Keypad eFlo 2.0 unit. An explanation of the panel's components is provided as well. The panel layout will be referenced further in this section.

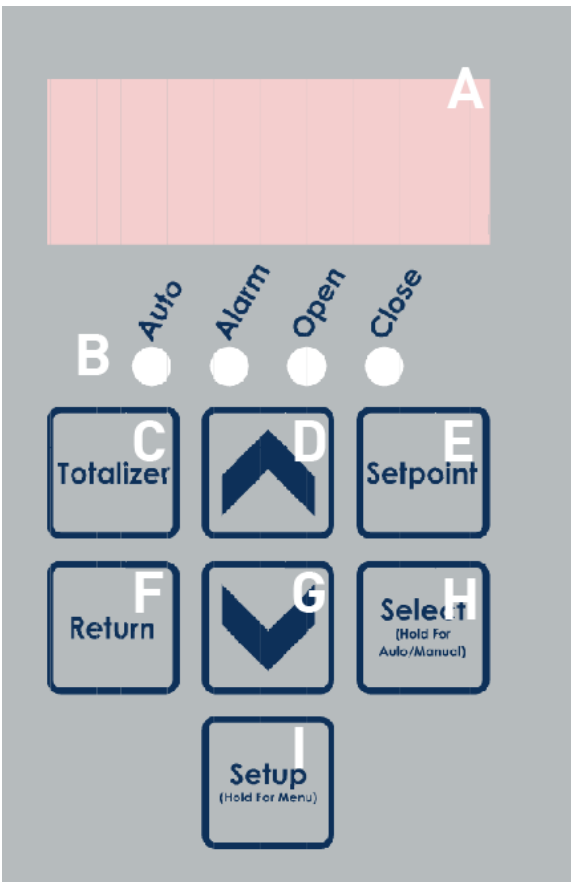


Figure 1 - eFlo 2.0 LED Flow Control Panel Layout

### A – LED display

By default, the LED display is used to display the current flow. The LED display can also be used to show the totalizer value, current setpoint, and Setup menu options with associated settings. During active alarms, alarm status messages may also be displayed.

### B – Status indicators

These four lights come on in various situations:

**Auto:** When lit, the eFlo is in Auto valve control mode. When not lit, the unit is in Manual valve control mode.

**Alarm:** When lit, an alarm is active.

See [Alarms](#) section for more information.

**Open:** When lit, the valve is driving open.

**Close:** When lit, the valve is driving closed.

### C – Totalizer button

### D – Up button

### E – Setpoint button

### F – Return button

### G – Down button


### H – Select button

### I – Setup button

## Keypad Basic Functions


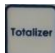
This section explains the most basic functionality of the eFlo 2.0. Additional options are available in the Setup menu and are explained in more detail in subsequent sections.

### View Totalized Flow


To view totalized flow, push . Hold the button down for a few seconds to show the full totalized numeric value by scrolling left.

The flow rate totalizer records cumulative flow rates measured by the meter. The totalizer is active at all times. The maximum totalized value is 999,999,999,999 (in any unit of flow measurement).

### Reset Totalized Flow

To reset the totalized flow, push and hold  for five seconds. Then push  to confirm that the value has been reset to zero.

### Switch between Auto and Manual Modes


To switch between Auto and Manual modes, hold  for five seconds. When in Auto mode, the Auto light (B) will be active. When in Manual mode, the Auto light (B) will not be active.

In Auto mode, the motorized valve will be automatically adjusted based on setpoint.




### Adjust Flow Rate (Manual Mode Only)

To adjust the flow rate while in Manual mode, use  and .

### Display Setpoint

To display the current setpoint, press .

### Adjust Setpoint

To adjust the current setpoint, press and hold  and use  and .

NOTE: Setpoint can also be adjusted using one of the following methods:

1. Remote analog signal (4-20mA)
2. Remote digital signal with Modbus serial communications over RS485 – Register 18
3. Web interface (refer to [Main Screen](#))

It is important to note that the remote analog setpoint setting overwrites any manual setting. Therefore, if manual control of setpoint is desired, ensure that there is no external signal overwriting the manual setting.


### Deviation Alarm

LED Display	Alarm
unPr	Under pressure (factory set)
h iPr	High pressure (factory set)
Shut	Low flow issue (factory set)


When an alarm is active, the Alarm light will turn on. A warning message will be displayed on the LED screen as shown. Setpoints for these alarms are set through a Modbus interface or by using the eFlo Web Interface. See [Alarms](#) section for more information.

h iLn	Valve is at its max open position (factory set)
LoFL	Low flow (user defined)
h iFL	High flow (user defined)
LoPr	Low pressure (user defined)
dEUA	Deviation alarm
coMn	Internal communications alarm

## Enter Menu







To enter the Setup menu, hold  for five seconds.

## Keypad Setup Menu System

To enter the Setup menu, hold  for five seconds.

## Setup Menu Keypad Functions

When you first enter the setup menu, the eFlo will display P 000 (the current menu option).

To navigate the setup menu, use  and  to move vertically through the menu options, and use  and  to move horizontally through the menu options. (Think of  and  as your Right and Left buttons while navigating the menus (see Figure 2 - Visualization of Menu Navigation Functions).


Once you have reached the desired menu option, press  to access that option. See Figure 3 - Keypad Menu Navigation Menu for a map of the menu options. The options are described in more detail in the Menu System Details section.



Figure 2 - Visualization of Menu Navigation Functions

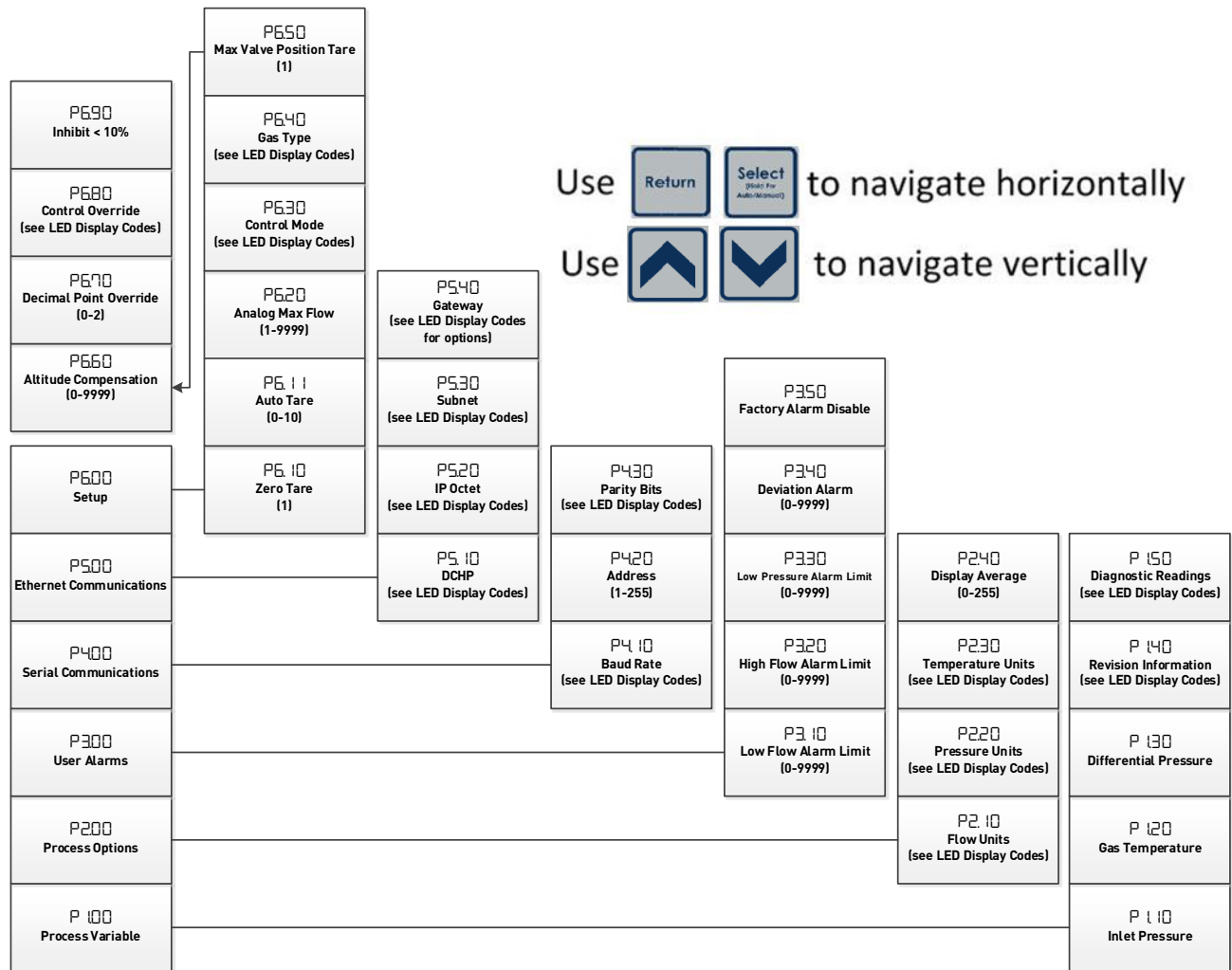




Figure 3 - Keypad Menu Navigation Menu

EXAMPLE –To access the “Low Pressure Alarm Limit” option (P330):



- Hold **Setup** (blue square with 'Setup') for five seconds. You will enter the menu at P 100.
- Press **Up Arrow** (blue square with 'Up Arrow') twice to move (vertically) to P300
- Press **Select** (blue square with 'Select') to move (horizontally) to P3.10
- Press **Up Arrow** (blue square with 'Up Arrow') twice to move (vertically) to P330
- Press **Select** (blue square with 'Select') to enter into the menu option.

Once you have entered into a menu option, use  and  to cycle through options or set values.

When ready to save the current setting or value, press .

To exit the menu option without saving changes, press .

### Exiting the Menu System

To exit the menu system entirely, press  to return to the 100-level menus, then press  again to return to the default eFlo display.

### Menu System Details

**P 100: Process Variable** – These values are read-only and are meant for diagnostic purposes.

- **P 110: Inlet Pressure** – Line Pressure measured by the high pressure sensor; the value is based on the unit set in **P220**.
- **P 120: Gas Temperature** – Line Temperature; the value is based on the unit set in **P230**.
- **P 130: Differential Pressure** – Difference in pressure measured between the high and low pressure sensors; the value is based on the unit set in **P220**.
- **P 140: Revision Information** – Displays the revision level of the firmware in the Communications and Control boards:
  - **P 141** = Communications board.
  - **P 142** = Control board.
- **P 150: Diagnostic Readings** – Displays the following diagnostic measurements of the meter used for troubleshooting:
  - **P 151** = Hi Pressure Sensor mA; 4-20 mA signal correlating to the pressure supplied to the meters high side pressure sensor.
  - **P 152** = Lo Pressure Sensor mA; 4-20 mA signal correlating to the pressure on the meters low side pressure sensor.
  - **P 153** = Analog Input mA; 4-20 mA incoming control signal from an external source.
  - **P 154** = Analog Output mA; 4-20 mA outgoing signal being sent to external equipment.
  - **P 155** = Zero Tare Value; Indicates valve motor assembly steps for fully closed valve position for no flow.
  - **P 156** = Max Valve Position; Indicates the maximum steps that the valve motor assembly will open to.

**P200: Process Options** – These values are modifiable and change how the user views the flow rate and process variables. See Appendix 1: Menu Option Table for available options if not listed here.



- **P2.10: Flow Units** – Unit of flow rate displayed.
- **P2.20: Pressure Units** – Unit of pressure displayed.
- **P2.30: Temperature Units** – Unit of temperature displayed; °F and °C available.
- **P2.40: Display Average** – Time used to average the flow rate to be displayed. Increments in 0.1 Seconds with 100 being equal to 10 seconds (range for this value is 1 to 255).

**P3.00: User Alarms** – Values are modifiable and allow the user to set custom high and low flow alarms as well as low pressure alarms in addition to the factory low and high pressure alarms.

- **P3.10: Low Flow Alarm Limit** – Triggers an alarm if the flow drops below the programmed value (0 = alarm not set).
- **P3.20: High Flow Alarm Limit** – Triggers an alarm if the flow increases above the programmed value (0 = alarm not set).
- **P3.30: Low Pressure Alarm Limit** – Triggers an alarm if the supply pressure drops below the programmed value (0 = alarm not set).  
*NOTE: Factory high pressure alarm is not viewable or editable.*
- **P3.40: Deviation Alarm** – Triggers an alarm after 60 seconds if the flow PV deviates from the flow SP more than the defined deviation (0 = alarm not set).
- **P3.50: Factory Alarm Disable** – Disables three preset factory alarms given in **P3.51** – Under Pressure, **P3.52** – Valve Shut, and **P3.53** – Max Opening (on = alarm is disabled).

**P4.00: Serial Communications** – Values are modifiable and are used to set the serial communications.

- **P4.10: Baud Rate**
- **P4.20: Address**
- **P4.30: Parity Bits**

**P5.00: Ethernet Communications** – Values are modifiable and are used to set the Ethernet Settings.

- **P5.10: DHCP** – Enabling allows the unit to automatically obtain addressing.
- **P5.20: IP Octet** – Used to manually set the IP address of the device. **P5.21**–**P5.24** = octets 1-4 respectively.
- **P5.30: Subnet** – Used to manually set the Subnet of the device. **P5.31**–**P5.34** = octets 1-4 respectively.
- **P5.40: Gateway** – Used to manually set the Gateway of the device. **P5.41**–**P5.44** = octets 1-4 respectively.

**P6.00: Setup** – Values are modifiable and changes important device options.

***NOTE: These options should ONLY be changed if absolutely necessary. Please contact SSI before making changes to these settings.***

- **P6.10: Zero Tare** – Resets the zero flow rate of the meter (manual mode with valve closed and pressure applied only).

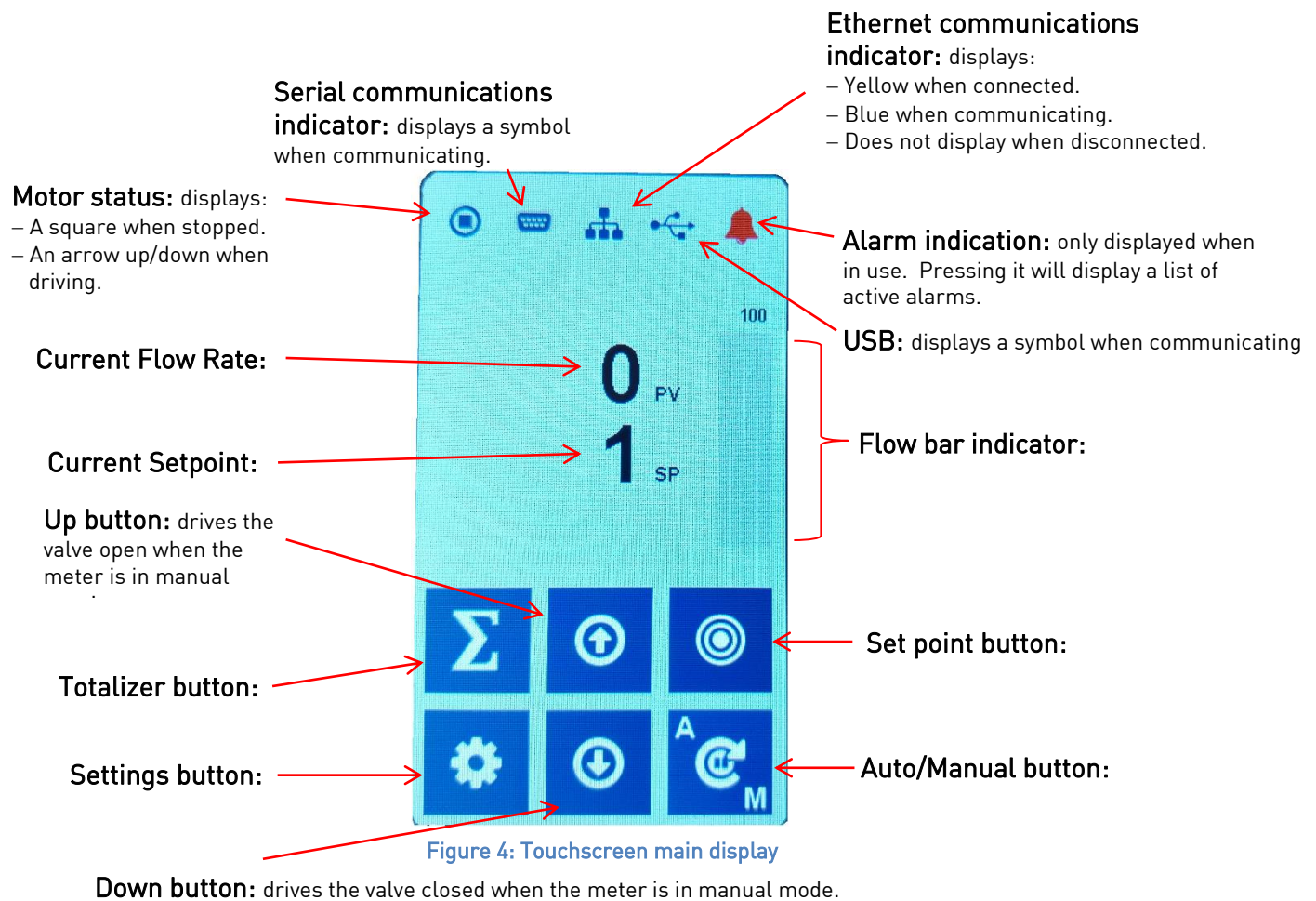
- **P6.11: Auto Tare** - The eFlo will automatically tare when it is at a zero setpoint and receives a non zero setpoint. It will delay up to 10 seconds after receiving the setpoint to allow for inlet pressure to stabilize.
- **P6.20: Analog Max Flow** - Sets the 4-20mA analog in and out based on desired max flow rate allowable.
- **P6.30: Control Mode** - Sets control method of the meter. Options include Flow mode, Valve mode, Manual mode, and Ratio mode.
  - Flow mode refers to standard control based on a specific flow setpoint for use with standard gases (0 = flow mode).
  - Valve mode refers to valve position control based on % output (commonly used for carbon control gases), (1 = valve mode).
  - Manual mode is used for analog flow meters and in-line meters, which do not contain valve motors for automatic flow control (2 = manual mode).
  - Ratio mode is used for specific applications involving ratio control like mixing systems (3 = ratio mode).
- **P6.40: Gas Type** - Used to set the gas type of the meter. ***NOTE: changing this value may limit the amount of flow indicated by the info tag on the front of the meter.***
- **P6.50: Max Valve Position Tare** - Sets the max position the valve is capable of driving to in valve position mode (manual mode with valve opened to desired max flow rate).
- **P6.60: Altitude Compensation** - Sets the altitude for the installed location. Units are feet above sea level.
- **P6.70: Decimal Point Override** - Allows the flow to display with no, 1, or 2 decimal points.
- **P6.80: Control Override** - Allows temporary digital control of the meter assuming that the meter set point is being controlled with an analog signal. When set to "Auto", the meter can be remotely controlled with a digital or analog signal. This feature is for special uses. Contact SSI for more details about this option.
- **P6.90: Inhibit < 10%** - Inhibits reporting of flow values below the 10:1 turndown of the meter. It is especially useful when using manual or no control meters.

Reference [Appendix 1: Menu Option Tables](#) for a detailed chart of parameter options

## Touchscreen Operating Procedure

The eFlo system is equipped with a pressure and flow rate alarm (high and low), flow rate totalizer, and integrated valve control. The unit can be operated in either manual or automatic mode for flow rate control. This section of the manual also provides an explanation of the basic menu navigation through the touchscreen interface as well as how the unit is operated including: valve control modes, flow limit control, flow alarming, flow totalizing, and programming of the unit.



The figure below shows the layout of the Main Screen on the touchscreen eFlo 2.0 unit.



## Touchscreen Basic Functions

This section explains the most basic functionality of the eFlo 2.0. Additional options are available in the Setup menu and are explained in more detail in subsequent sections.

### View Active Alarms

To view the active alarms, push on the  symbol. This will bring up a list of active alarms. To return to the main screen, press .

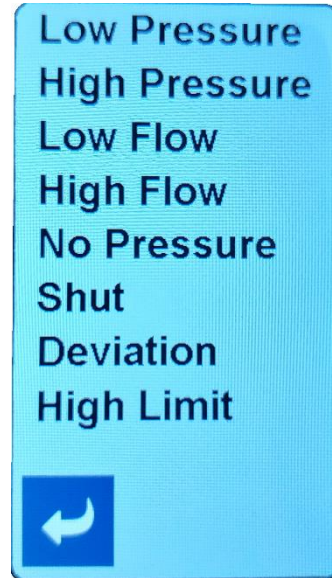






Figure 5: Active Alarm Screen

### View Totalized Flow

To view totalized flow, push . This will bring up the totalizer screen. To return to the main screen, press .

### Reset Totalized Flow


To reset the totalized flow, push  from the totalizer screen. To return to the main screen, press .

The flow rate totalizer records cumulative flow rates measured by the meter. The totalizer is active at all times. The maximum totalized value is 999,999,999,999 (in any unit of flow measurement).



Figure 6: Totalizer Screen

### Switch between Auto and Manual Modes

To switch between Auto and Manual modes, hold  for five seconds. When in Manual mode, the screen will display a yellow background (see below).

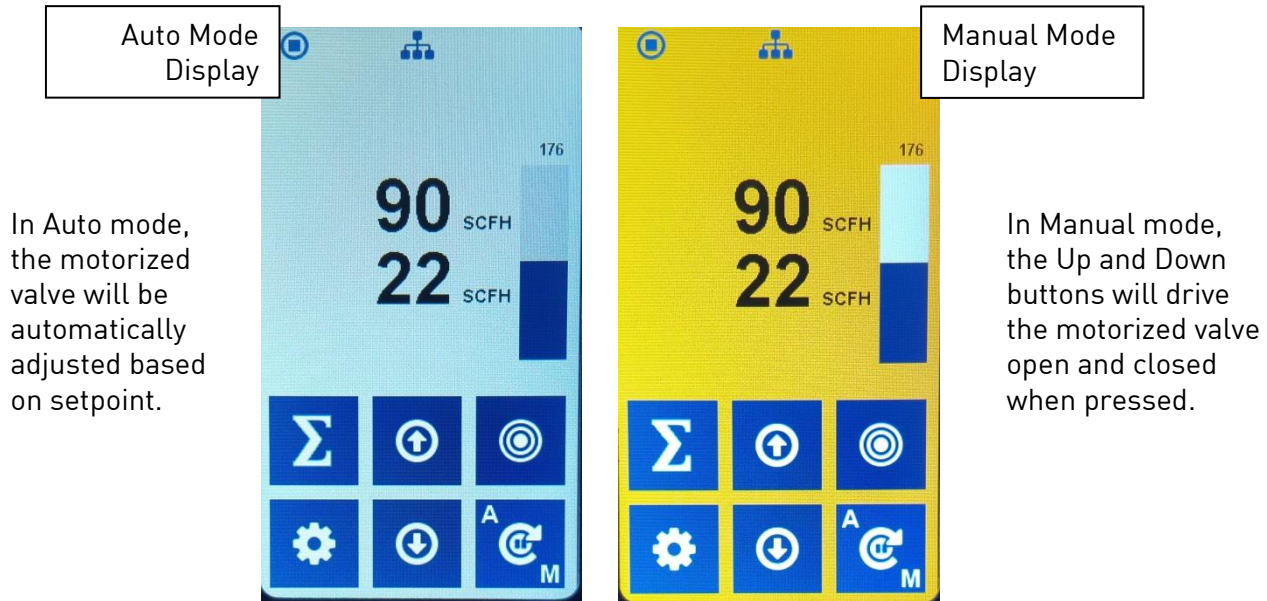





Figure 7: Auto and Manual Modes

### Adjust Flow Rate (Manual Mode Only)

To adjust the flow rate while in Manual mode, use  and .

### Adjust Setpoint

To display the current setpoint, press . This will bring up the setpoint screen.

Use the numeric keypad to enter the desired setpoint. Press  to accept changes, or press  to return to the main screen without saving changes.

NOTE: Setpoint can also be adjusted using one of the following methods:

1. Remote analog signal (4-20mA)
2. Remote digital signal with Modbus serial communications over RS485 – Register 18
3. Web interface (refer to Main Screen).

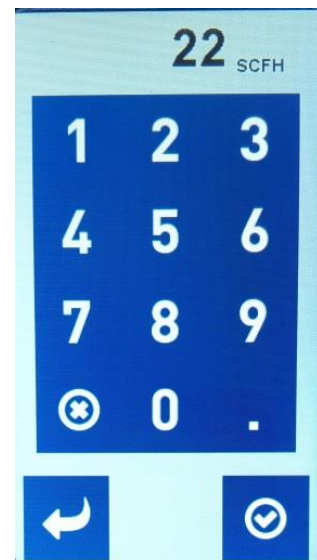



Figure 8: Setpoint Screen

**Note:** The remote setpoint setting overwrites any manual setting. Therefore, if manual control of setpoint is desired, ensure that there is no external signal overwriting the manual setting.



## Settings Menu

To enter the Settings Menu, press .

The Settings Menu contains seven options including:

- Instrument Information & Diagnostics Menu
- Basic Configuration Menu
- Basic Configuration - Flow Alarm Menu
- Network Configuration - Serial Comms Menu
- Network Configuration - Ethernet Comms Menu
- Instrument Configuration - Gas Menu
- Instrument Configuration - Additional Options Menu

Details of each menu option are explained on the following pages.

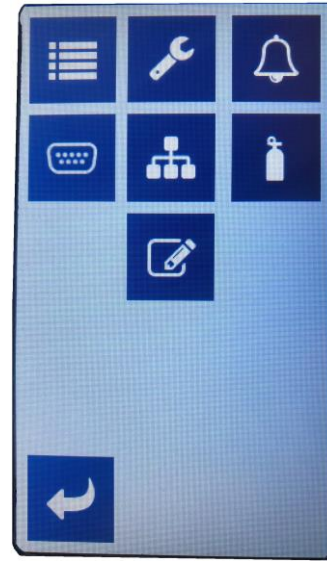



Figure 9: Settings Menu Screen



### Instrument Information & Diagnostics Menu

This screen displays the following information:

- Model: Instrument model.
- Serial: Instrument serial number .
- 31677/31676/31675 Version: Circuit board software version.
- Air flow: Calculated air flow from the remote analog signal when the meter is used in Ratio Mode.
- High pressure: Pressure sensor mA reading on the “high” side of the orifice plate (N/A for the eFlo-H or eFlo-L meters).
- Low pressure: Pressure sensor mA reading on the “low” side of the orifice plate.
- Analog in: Analog input mA signal being received.
- Analog out: Analog output mA signals being sent.
- Temperature: Gas/Liquid temperature flowing through the meter.
- Valve maximum tare step setting.
- Valve zero tare step setting.

Press  to return to the menu screen.

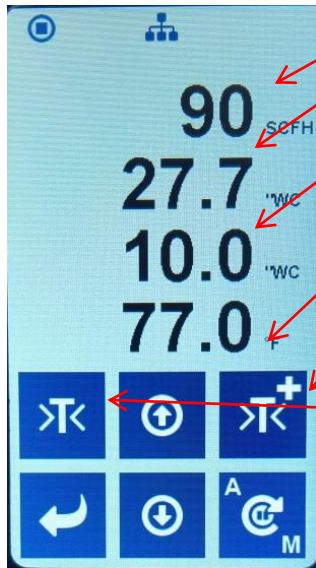
Model:	eFlo 2.0
Serial:	EF220344
31677 Version:	1.09
31676 Version:	1.07
31675 Version:	1.10
Air Flow:	0.0 SCFH
High Pressure:	3.980 mA
Low Pressure:	3.996 mA
Analog In:	0.355 mA
Analog Out:	4.000 mA
Temperature:	77.9 °F
Valve Tare:	14000
Flow Tare:	2

Figure 10: Information & Diagnostics Menu



### Basic Configuration Menu

These values are read-only and are meant for diagnostic purposes.



**Flow:** The current flow reading

**Inlet Pressure:** Line Pressure measured by the high pressure sensor; the value is based on the unit set in the Units menu.

**Differential Pressure:** Pressure measured by the high and low pressure sensors; the value is based on the unit set in the Units menu.

**Gas Temperature:** Line Temperature; the value is based on the unit set in the Units menu.

**Max Tare Button:** This button is used to set the max valve position. The eFlo must be in manual mode. Manually open the valve until the max flow is achieved, then press the button.

**Zero Tare Button:** This button is used to zero the meter reading. The eFlo must be in manual mode. Manually close the valve, then press the button.


Press  to return to the menu screen.

Figure 11: Process Variable Menu



### Basic Configuration - Flow Alarm Menu

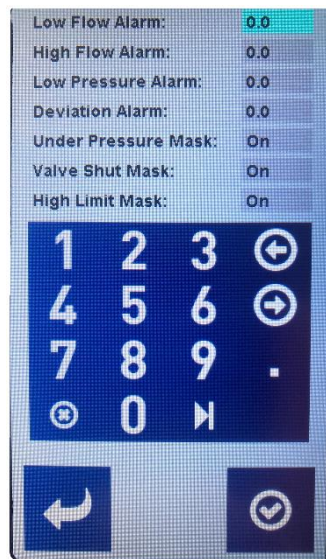


Figure 12: Flow Alarm Menu

**Low Flow Alarm Limit:** Triggers an alarm if the flow drops below the programmed value (0 = alarm not set).

**High Flow Alarm Limit:** Triggers an alarm if the flow increases above the programmed value (0 = alarm not set).

**Low Pressure Alarm Limit:** Triggers an alarm if the supply pressure drops below the programmed value (0 = alarm not set).

**Deviation Alarm Limit:** Triggers an alarm after 60 seconds if the flow PV deviates from the flow SP more than the defined deviation (0 = alarm not set).

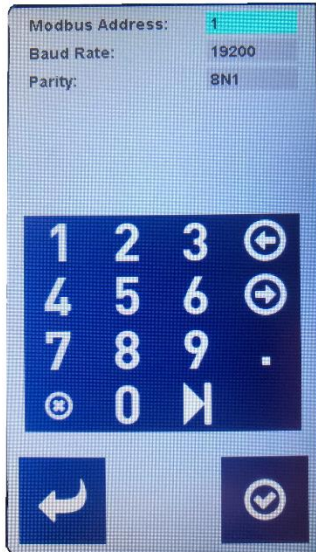
**Under Pressure Mask:** Triggers an alarm when the differential pressure is less than 3" W.C. of the supply pressure (On = alarm is active).


**Valve Shut Mask:** Triggers a "Shut" display when the flow is less than 10% of the maximum flow and there is pressure available. This alarm is used mainly on manual eFlo meters and in-line meters to alert the user that the meter's valve may not be fully closed (On = alarm is active).

**High Limit Mask:** Triggers an alarm when the valve is fully opened to its maximum limit (On = alarm is active).



### Network Configuration - Serial Communications Menu



Values are modifiable and are used to set the serial communications. Press the  button to scroll through the options and highlight each value for modification.

**Modbus Address:** Use the numeric keypad to input the desired settings.

**Baud Rate:** Used to select the desired Baud Rate. Tap to select.

**Parity:** Used to select the desired Parity.



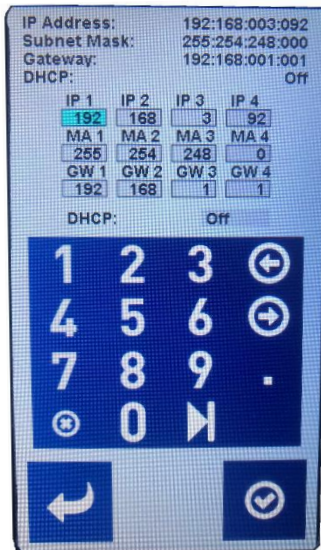
Press  to accept changes, or press  to return to the menu screen without saving changes.

Figure 13: Serial Communications Menu



### Network Configuration - Ethernet Communications Menu

By default, this menu is passcode-protected. Use the numeric keypad to enter the appropriate security code.



Values are modifiable and are used to set the Ethernet Settings.



Use the numeric keypad to input the desired settings.

**IP 1-4:** Used to manually set the IP address of the device.

**MA 1-4:** Used to manually set the Subnet mask of the device.

**GW 1-4:** Used to manually set the Gateway of the device.

**DHCP:** Enabling allows the unit to automatically obtain addressing.

Use the  button to advance/scroll through each setting. Use  to clear the current selection and use the keypad to enter a new setting.



Press  to accept changes, or press  to return to the menu screen without saving changes.

Figure 14: Ethernet Communications Menu





### Instrument Configuration - Gas Menu

By default, this menu is passcode-protected. Use the numeric keypad to enter the appropriate security code.

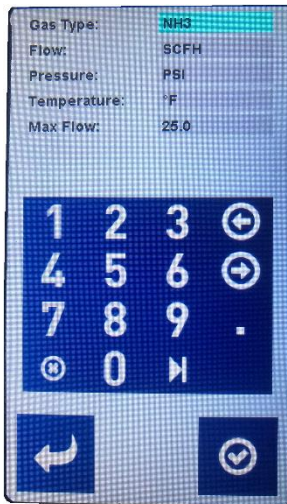


Figure 15: Gas Menu

Use the button to advance/scroll through each setting. Use the or buttons to scroll through the list of programmed settings.

Tap the desired gas type. Press to accept changes, or press to return to the menu screen without saving changes.

**NOTE:** changing this value may limit the amount of flow indicated by the info tag on the front of the meter

*This option should ONLY be changed if absolutely necessary. Please contact SSI before making changes to this setting.*



### Instrument Configuration – Addition Options Menu

These settings affect how flow changes are displayed. They also affect how the meter controls flow from an external control source.

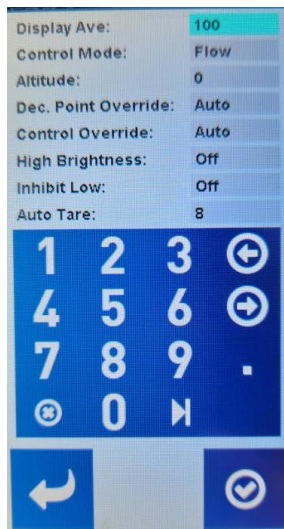


Figure 16: Instrument Configuration

**Display Ave:** This value acts like a filter by averaging the flow values, which are displayed. The setting is in tenths of a second (i.e. 100 = 10.0 seconds). This only affects how the flow is displayed and not how the meter controls the flow.

**Control Mode:** The control mode affects how the meter is controlled by an external source.

- Flow mode refers to standard control based on a specific flow set point for use with standard gases.
- Valve mode refers to valve position control based on % output for carbon control gases.
- Manual mode is used on meters with no valve motor for automatic adjustment. This includes the eFlo manual meter (with a control knob) and the eFlo In-line meter.
- Ratio mode is used for specific applications involving ratio control like mixing systems.

**Altitude:** –This is the altitude in feet above sea level where the meter is installed and operating. This value affects the flow due to changes in air density at a given altitude.




**Dec. Point Override:** This setting allows the flow to be displayed with a given number of decimal point places. It is limited to 2 decimal points.



**Control Override:** In Auto mode the system gives priority to the analog signal. The override is used to set a digital signal even though an analog signal is present.

**High Brightness:** Increases brightness of display

**Inhibit Low:** when On, readings below 10:1 turndown will be masked

**Auto Tare:** choose time (in seconds) after reaching setpoint to automatically tare

Use the  button to advance/scroll through each setting. Use the  or  buttons to scroll through the list of programmed settings.

Press  to accept changes, or press  to return to the menu screen without saving changes.

## Maintenance

There is no routine maintenance required for the eFlo 2.0 unit. Please contact SSi with any questions not covered in the Troubleshooting Guide.

## Web Interface

The eFlo meter is equipped with a web interface that can be accessed using an Internet web browser such as Mozilla Firefox, Google Chrome, or Microsoft Internet Explorer. In order to open the web interface with a web browser, you will need to know either the IP address or the hostname of the web interface. SSi recommends asking an IT engineer or network administrator to set up the web interface prior to use.

### Using the Web Interface

To access the web interface, open a web browser, and in the location bar, enter the IP address or name of the webserver. The main screen will then appear, as shown below.

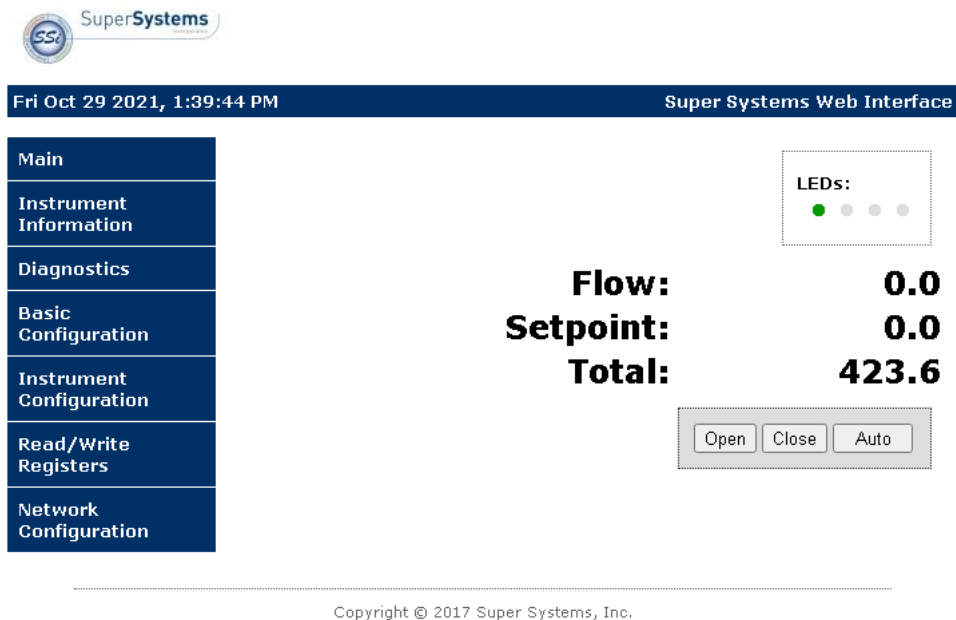


Figure 17: Main Screen of Web Interface

The web interface features several screens. Note that some screens require a login and password. The default login is username **admin** with password **2** (unless otherwise specified by the customer at the time of order).

- **Main.** This screen shows status information such as flow rate, setpoint, and which LEDs are illuminated on the unit, and the amount of total flow since the previous reset.
- **Instrument Information.** This screen shows eFlo model number, unit serial number, and software version numbers.
- **Diagnostics.** This screen displays information on pressure differential, inlet pressure, temperature, and density.
- **Basic Configuration.** The Basic Configuration screen displays, and allows you to change, basic operating parameters for the eFlo unit.
- **Instrument Configuration** (login and password required). The Instrument Configuration screen displays, and allows you to change, operating parameters for the eFlo unit.
- **Read/Write Registers** (login and password required). This screen displays the register values of the meter for setup and troubleshooting purposes.


- **Network Configuration** (login and password required). Using this screen, you can adjust network settings, such as host name and IP address. Note that if DHCP is enabled, the IP address will be dynamic allowing the network to assign the address.

### Main Screen

The main screen (shown above) provides real-time information on the operation of the eFlo unit. The current gas flow process value and setpoint are displayed, as well as the totalized flow. Four circular icons on the screen represent the four LEDs on the front of the unit; these icons will illuminate and darken along with the corresponding LEDs. There is an Auto/Manual button that allows the operator to toggle the meter between the auto and manual mode of operation. In the manual mode of operation, the **Open** button will drive the motor to open the valve, and the **Close** button will drive the motor to close the valve.

### Instrument Information

The Instrument Information page displays the SSi model number, specific serial number of the eFlo unit, and the current version of the software.



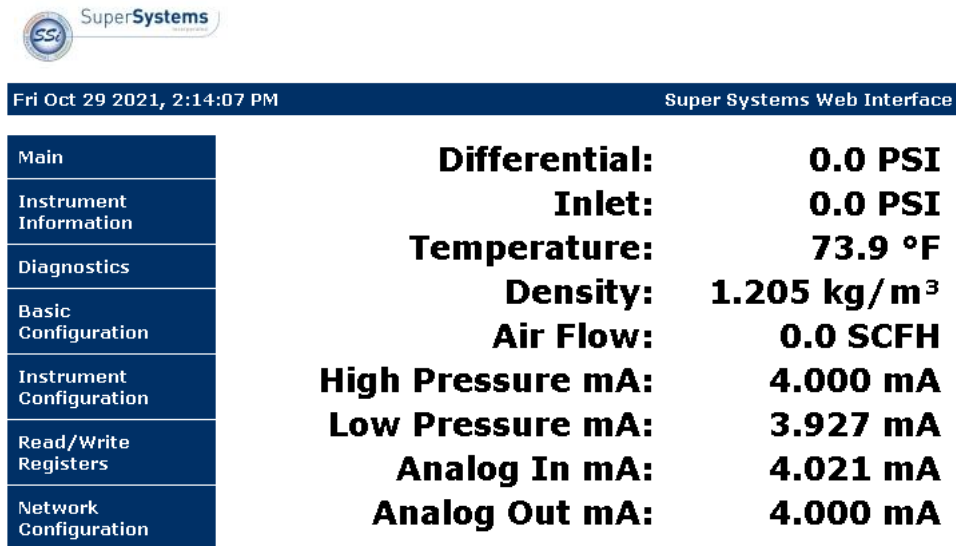
Thu Dec 05 2024, 4:02:41 PM		Super Systems Web Interface	
<b>Main</b>	<b>Model #</b>	<b>eFlo 2.0</b>	
<b>Instrument Information</b>	<b>Serial #</b>	<b>eFlo 2.0 eNet</b>	
<b>Diagnostics</b>	<b>31677 Version #</b>	<b>1.15</b>	
<b>Basic Configuration</b>	<b>31676 Version #</b>	<b>0.00</b>	
<b>Instrument Configuration</b>	<b>31675 Version #</b>	<b>1.12</b>	
<b>Read/Write Registers</b>			
<b>Network Configuration</b>			

Copyright © 2017 Super Systems, Inc.

Figure 18: Instrument Information Web Page

## Diagnostics

This screen displays information on pressure differential, inlet pressure, temperature, and density. It also provides the mA readings of the differential pressure transducer. The Diagnostics page also displays any incoming (Analog In mA) or outgoing (Analog Out mA) analog (4-20mA) control signals.

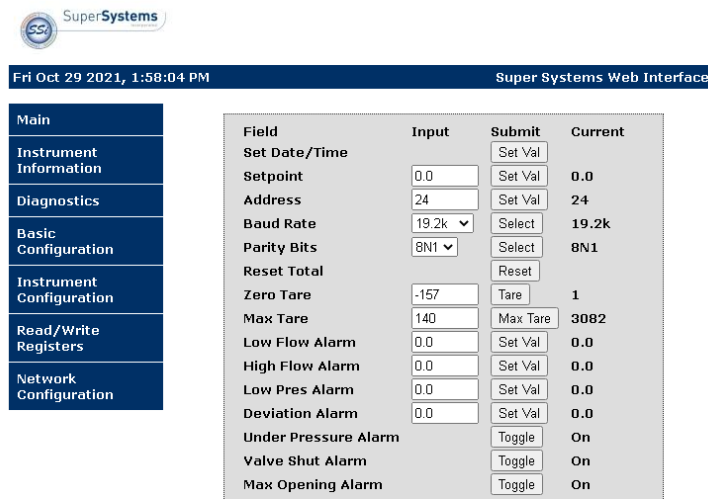


Copyright © 2017 Super Systems, Inc.

Figure 19: Diagnostics Web Page

## Basic Configuration

The Basic Configuration page displays current basic parameter values and provides the ability to set, select, and reset values. The parameters are described in more detail below.



Copyright © 2017 Super Systems, Inc.


Figure 20: Basic Configuration Web Page

Parameter	Description
Set Dat/Time	Sets the date/time (real time calendar clock).
Setpoint	The current flow setpoint.
Address	The Modbus address of the device - a number from 1-247. The device will respond to 250 universally.
Baud Rate	The baud rate for communications.
Reset Total	Resets the totalized value.
Zero Tare	Resets the zero flow rate of the meter (manual mode only).
Max Tare	Sets the maximum opening position to which the valve is capable of driving (manual mode only).
Low Flow Alarm	Triggers an alarm if the flow drops below the programmed value (0 = alarm not set).
High Flow Alarm	Triggers an alarm if the flow increases above the programmed value (0 = alarm not set).
Low Pres Alarm	Triggers an alarm if the supply pressure drops below the programmed value (0 = alarm not set).
Deviation Alarm	Triggers an alarm after 60 seconds if the flow PV deviates from the flow SP more than the defined deviation (0 = alarm not set).
Under Pressure Alarm	Triggers an alarm when the differential pressure is less than 3" W.C. of the supply pressure (On = alarm is active).
Valve Shut Alarm	Triggers a "Shut" display when the flow is less than 10% of the maximum flow and there is pressure available. This alarm is used mainly on manual eFlo meters and in-line meters to alert the user that the meter's valve may not be fully closed (On = alarm is active).
Max Opening Alarm	Indicates when the valve is opened to its maximum limit (On = alarm is active)

Table 5: Parameters and Descriptions for Basic Configuration

### Instrument Configuration

The Instrument Configuration page displays current parameter values and provides the ability to set, select, and reset values. The parameters are described in more detail below.


**SuperSystems**

Thu Dec 05 2024, 3:53:00 PM
Super Systems Web Interface

Main	Instrument Configuration
Main	
Instrument Information	
Diagnostics	
Basic Configuration	
Instrument Configuration	
Read/Write Registers	
Network Configuration	

Field	Input	Submit	Current
Gas Type	<input type="text" value="Air"/>	<input type="button" value="Select"/>	<b>Air</b>
Custom SG	<input type="text" value="0.000e+0"/>	<input type="button" value="Set Val"/>	<b>0.000e+0</b>
Flow Units	<input type="text" value="m³/hr"/>	<input type="button" value="Select"/>	<b>m³/hr</b>
Pres. Units	<input type="text" value="WC"/>	<input type="button" value="Select"/>	<b>"WC</b>
Temp. Units	<input type="text" value="°F"/>	<input type="button" value="Select"/>	<b>°F</b>
Sensor Ave.	<input type="text" value="240"/>	<input type="button" value="Set Val"/>	<b>240</b>
Max Flow	<input type="text" value="47.5"/>	<input type="button" value="Set Val"/>	<b>47.5</b>
Ctrl Mode	<input type="text" value="Valve"/>	<input type="button" value="Select"/>	<b>Valve</b>
Serial	<input type="text" value="eFlo 2.0 e"/>	<input type="button" value="Set Val"/>	<b>eFlo 2.0 eNet</b>
Alt. Comp.	<input type="text" value="0"/>	<input type="button" value="Set Val"/>	<b>0</b>
Dec. Over.	<input type="text" value="Auto"/>	<input type="button" value="Set Val"/>	<b>Auto</b>
Ctrl Over.	<input type="text" value="Auto"/>	<input type="button" value="Set Val"/>	<b>Auto</b>
Auto Tare	<input type="text" value="0"/>	<input type="button" value="Set Val"/>	<b>0</b>
Inh. < 10%		<input type="button" value="Toggle"/>	<b>Off</b>

Copyright © 2017 Super Systems, Inc.

Figure 21: Instrument Configuration Web Page

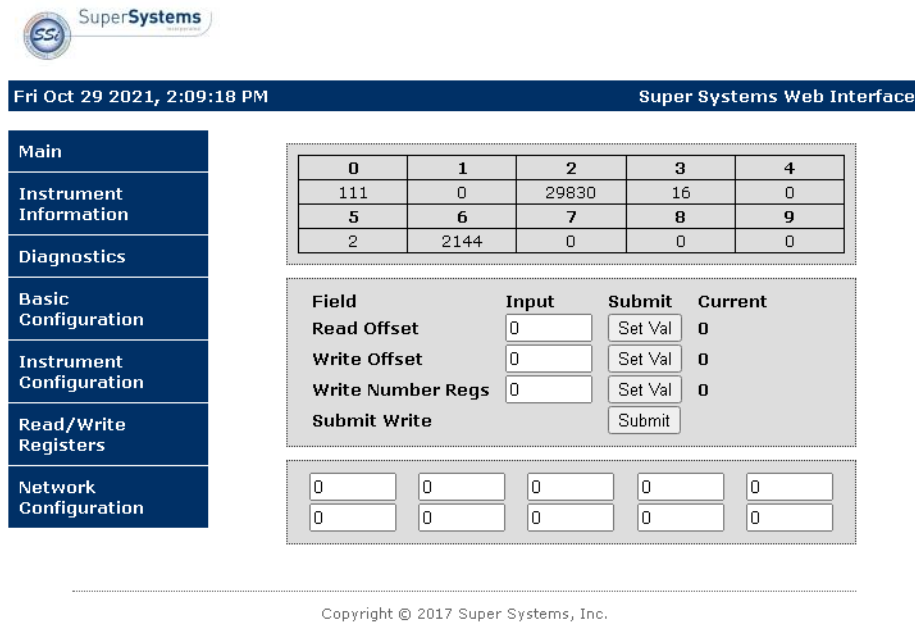
Parameter	Description
Gas Type	Used to set the gas type of the meter <i><b>NOTE: changing this value may limit the amount of flow indicated by the info tag on the front of the meter</b></i>
Custom Specific Gravity	Used to set custom value for specific gravity
Flow Units	Unit of Flow Rate displayed
Pres. Units	Unit of Pressure displayed
Temp. Units	Unit of Temperature displayed
Sensor Ave.	Time used to average the flow rate to be displayed. Increments in 0.1 Seconds with 100 being equal to 10 seconds (range for this value is 1 to 255).
Max Flow	Sets the 4-20mA analog in and out based on desired max flow rate allowable
Ctrl Mode	Sets the control mode between flow rate and valve position
Serial	Assigned serial number for this meter.
Alt. Comp.	Sets the altitude for the installed location. Units are feet above sea level.
Dec. Over.	Forces a meter to show more or less decimal places than are automatically set.
Ctrl Over.	Assigns the control type for setting the meter's flow set point.
Auto Tare	automatically tare, seconds after setpoint
Inhibit < 10%	mask readings below 10:1 turndown

Table 6: Parameters and Descriptions for Instrument Configuration



## Read/Write Registers

This screen displays the register values of the meter for setup and troubleshooting purposes.



**SuperSystems**

Fri Oct 29 2021, 2:09:18 PM Super Systems Web Interface

0	1	2	3	4
111	0	29830	16	0
5	6	7	8	9
2	2144	0	0	0

Field	Input	Submit	Current
Read Offset	<input type="text" value="0"/>	<input type="button" value="Set Val"/>	0
Write Offset	<input type="text" value="0"/>	<input type="button" value="Set Val"/>	0
Write Number Regs	<input type="text" value="0"/>	<input type="button" value="Set Val"/>	0
<input type="button" value="Submit Write"/>		<input type="button" value="Submit"/>	

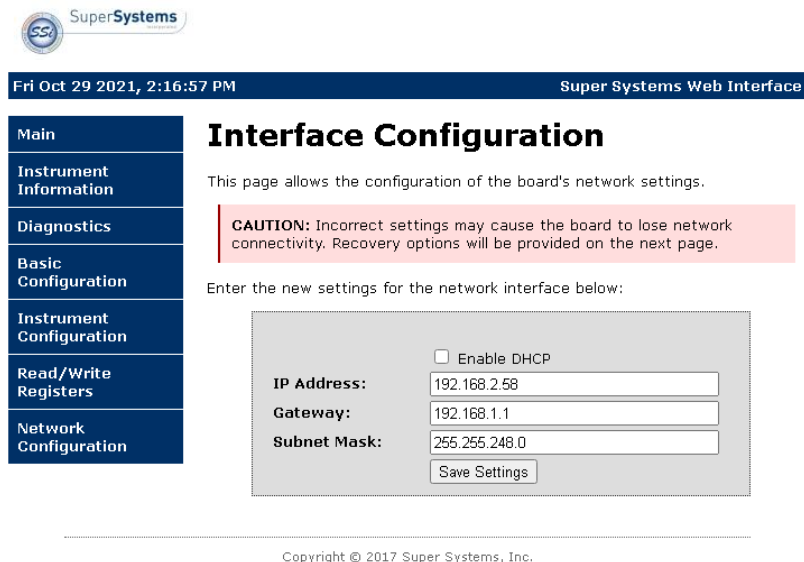
<input type="text" value="0"/>	<input type="text" value="0"/>	<input type="text" value="0"/>	<input type="text" value="0"/>	<input type="text" value="0"/>
<input type="text" value="0"/>	<input type="text" value="0"/>	<input type="text" value="0"/>	<input type="text" value="0"/>	<input type="text" value="0"/>

Copyright © 2017 Super Systems, Inc.

Figure 22: Read/Write Registers Web Page

## Network Configuration

Using this screen, you can adjust network settings, such as host name and IP address.



**SuperSystems**

Fri Oct 29 2021, 2:16:57 PM Super Systems Web Interface

### Interface Configuration

This page allows the configuration of the board's network settings.

**CAUTION:** Incorrect settings may cause the board to lose network connectivity. Recovery options will be provided on the next page.

Enter the new settings for the network interface below:

<input type="checkbox"/>	Enable DHCP
IP Address:	<input type="text" value="192.168.2.58"/>
Gateway:	<input type="text" value="192.168.1.1"/>
Subnet Mask:	<input type="text" value="255.255.248.0"/>
<input type="button" value="Save Settings"/>	

Copyright © 2017 Super Systems, Inc.

Figure 23: Interface Configuration Web Page

The Interface Configuration page allows you to view network settings and change certain settings as well. **SSi recommends consulting an IT engineer or network administrator before changing any of these settings.**

To enable dynamic assignment of IP addresses, click on the **Enable DHCP** checkbox. Dynamic assignment means that the eFlo unit's IP address on the network will be assigned automatically, preventing IP address conflicts. The network must support dynamic IP assignment in order for this to work.

If Enable DHCP is not checked, IP and other settings can be changed manually. **These settings should be verified with your network administrator before being changed.** Failure to do so could result in IP conflicts and other network issues.

## Alarms

If you experience problems and cannot find the solution after troubleshooting, please call SSi Technical Support at (513) 772-0060.

Alarm Code	Possible Causes	Possible Corrective Actions
<b>h iPr</b> (High Pressure Factory Alarm)	Inlet pressure is above the max inlet pressure for the meter.	Decrease regulator pressure below the usable range of the sensor indicated on the calibration certificate.
<b>unPr</b> (Under Pressure Factory Alarm)	Due to low pressure based on factory-specified values, meter is unable to reach setpoint. Alarm is only active in Flow Control Mode with a setpoint above 0.	Increase regulator pressure.  Verify all upstream solenoids and/or ball valves are open.
<b>shut</b> (Shut Factory Alarm)	Flow rate is below accuracy threshold of 10:1. Alarm is only active in manual meters. This is a warning that flow rate accuracy is not guaranteed.	If a zero flow is required, make sure the knob is fully shut, as a false zero could be displayed.
<b>h iLn</b> (Hi Limit Factory Alarm)	Valve has achieved maximum allowable position.	Perform a Max Tare at desired valve position.  Verify inlet pressure is high enough to reach setpoint or desired flow rate.
<b>cofnn</b> (Internal Communications Failure)	Incorrect internal connections; Damage	Check internal wiring.  Call SSi Technical Support at (513) 772-0060.

Table 5 - Alarms

## Warranty

### *Limited Warranty for Super Systems Products:*

The Limited Warranty applies to new Super Systems Inc. (SSI) products purchased direct from SSI or from an authorized SSI dealer by the original purchaser for normal use. SSI warrants that a covered product is free from defects in materials and workmanship, with the exceptions stated below.

The limited warranty does not cover damage resulting from commercial use, misuse, accident, modification or alteration to hardware or software, tampering, unsuitable physical or operating environment beyond product specifications, improper maintenance, or failure caused by a product for which SSI is not responsible. There is no warranty of uninterrupted or error-free operation. There is no warranty for loss of data—you must regularly back up the data stored on your product to a separate storage product. There is no warranty for product with removed or altered identification labels. SSI DOES NOT PROVIDE ANY OTHER WARRANTIES OF ANY KIND, INCLUDING, BUT NOT LIMITED TO, THE IMPLIED WARRANTIES OR CONDITIONS OF MERCHANTABILITY AND FITNESS FOR A PARTICULAR PURPOSE. SOME JURISDICTIONS DO NOT ALLOW THE LIMITATION OF IMPLIED WARRANTIES, SO THIS LIMITATION MAY NOT APPLY TO YOU. SSI is not responsible for returning to you product which is not covered by this limited warranty.

If you are having trouble with a product, before seeking limited warranty service, first follow the troubleshooting procedures that SSI or your authorized SSI dealer provides.

SSI will replace the PRODUCT with a functionally equivalent replacement product, transportation prepaid after PRODUCT has been returned to SSI for testing and evaluation. SSI may replace your product with a product that was previously used, repaired and tested to meet SSI specifications. You receive title to the replaced product at delivery to carrier at SSI shipping point. You are responsible for importation of the replaced product, if applicable. SSI will not return the original product to you; therefore, you are responsible for moving data to another media before returning to SSI, if applicable. Data Recovery is not covered under this warranty and is not part of the warranty returns process. SSI warrants that the replaced products are covered for the remainder of the original product warranty or 90 days, whichever is greater.

## Revision History

Rev.	Description	Date	MCO #
-	First release	5/24/2018	2234
A	Additional Flow and Pressure Units. Updated Keypad information. Updated navigation map for LED model, added Altitude Compensation description, added startup procedure Appendix, added miscellaneous conditions information and IP information	2/21/2019	2256
B	Added model number information	5/3/2019	2265
C	Corrected Manual mode screen color reference, added shutoff valve note in Installation section	10/4/2019	2272
D	General updates to reflect current product	4/26/2022	2322
E	Updated register table, webpage information, connection image, other minor updates	3/26/2024	2348
F	Updated menus, alarms, screenshots, and added Studio 5000 procedure	7/18/2025	2371

## Appendix 1: Menu Option Tables

Flow Units	CFH CFH m <sup>3</sup> /h m <sup>3</sup> /h l/hr l/hr gph gph CFM CFM m <sup>3</sup> /min m <sup>3</sup> /min l/min l/min gpm gpm lb/h lb/h kg/h kg/h
Pressure Units	inH <sub>2</sub> O inH <sub>2</sub> O PSI PSI OSI OSI mBar mBar kPa kPa mmH <sub>2</sub> O mmH <sub>2</sub> O
DHCP	On On Off Off
Parity	8N1 8N1 8E1 8E1 8N2 8N2
Gas Type	Acetylene Acetylene Air Air Ammonia Ammonia Argon Argon Carbon Dioxide Carbon Dioxide Carbon Monoxide Carbon Monoxide Dissociated Ammonia Dissociated Ammonia Endo (w/methane) Endo (w/methane) Endo (w/propane) Endo (w/propane) Helium Helium Hydrogen Hydrogen Methane Methane Natural Gas Natural Gas Nitrogen Nitrogen Nitrous Oxide Nitrous Oxide Oxygen Oxygen Propane Propane Propylene Propylene Water Water Methanol Methanol
Ctrl Mode	0 Flow Control 1 Valve Position 2 Manual 3 Ratio
Baud Rate	1200 1200 2400 2400 4800 4800 9600 9600 14400 14400 19200 19200 28800 28800 38400 38400 57600 57600 76800 76800 115200 115200
Rev. Info	P 141 Comm Board Revision P 142 Control Board Revision
Diagnostics	P 151 Hi Pressure Sensor mA P 152 Lo Pressure Sensor mA P 153 Analog Input mA P 154 Analog Output mA P 155 Zero Tare Value P 156 Max Valve Position
Alarm Disable	P 351 Under Pressure P 352 Shut P 353 Hi Limit
Ctrl Override	Analog Analog Digital Digital

P521 - P524 Assigns IP Address	P531 - P534 Assigns Subnet	P541 - P544 Assigns Gateway
-----------------------------------	-------------------------------	--------------------------------

## Appendix 2: Verification Procedures

### Calibration Verification

The following procedure should be used for verifying the calibration of the flow meter

#### Items needed

- Calibrated Manometer with a usable range of 0 – 27.7 "wcg (0 – 1 PSI)
- Certificate of Calibration for the meter being verified

#### Procedure

1. Connect the high and low pressure ports of the manometer to the high and low pressure ports of the flow meter with the necessary tubing. Open the ball valves
2. Using the Verification Data section of the Certificate of Calibration, enter a flow setpoint based on the points given
3. Once setpoint has been achieved, verify the differential pressure on the manometer is within the tolerance indicated for that point in the Verification Data section
  - a. *If the differential pressure reading is out of tolerance, enter a setpoint of 0, close the high and low pressure port ball valves and remove the manometer from the eFlo.*
  - b. *Perform a zero tare on the meter as described in appendix 3 Startup Procedures below and restart this procedure from step 1.*
4. Once the verification is complete, close the high and low pressure port ball valves and remove the manometer and tubing
5. If the meter is determined to be out of tolerance, continue to the "Sensor Accuracy Verification" section of the manual below.
6. If the sensors are determined to be within tolerance but the flow rates are not, the meter may need to be recalibrated by SSI if necessary. Please contact SSI for next steps.

### Sensor Accuracy Verification

The following procedure should be used for verifying the accuracy of the installed pressure sensors

#### Items needed

- Calibrated Manometer with a usable range of 0 – 27.7 "wcg (0 – 1 PSI)

#### Procedure

1. Connect the high and low pressure ports of the manometer to the high and low pressure ports of the flow meter with the necessary tubing and open the ball valves
2. Go to the "Process Variables" section of the setup menu and check the indicated differential pressure reading. This is found in the P1.30 parameter of the keypad or the Process Variable menu of the touchscreen.
3. The differential pressure reading on the flow meter should be +/- 4% full scale of the compared reading of the manometer

- a. *Example: a full scale reading of 12"wcg should be +/- 0.48"wcg*
4. If the sensors are determined to be out of tolerance, the sensors may need to be replaced. Please contact SSI for next steps.







### Appendix 3: Startup Procedures

For optimal accuracy and control, the following procedure is recommended:

LED model:

1. **Zero Tare** (Resets the zero flow rate of the meter)
  - a. With the meter in manual mode, drive the valve completely closed.
  - b. Apply full inlet pressure to the meter.
  - c. Enter the setup menu and enter **P6.10**
  - d. Change the value to 1 and press Select to save.
2. **Max Tare** (Sets the max position the valve can drive to in valve position mode)
  - a. With full inlet pressure applied and the meter in manual mode, drive the valve open to the desired max flow rate.
  - b. Enter the setup menu and enter **P6.50**
  - c. Change the value to 1 and press Select to save.
3. **Altitude Compensation**
  - a. Enter the setup menu and enter **P6.60**
  - b. Enter the actual altitude for the installed location.
  - c. Press Select to save.

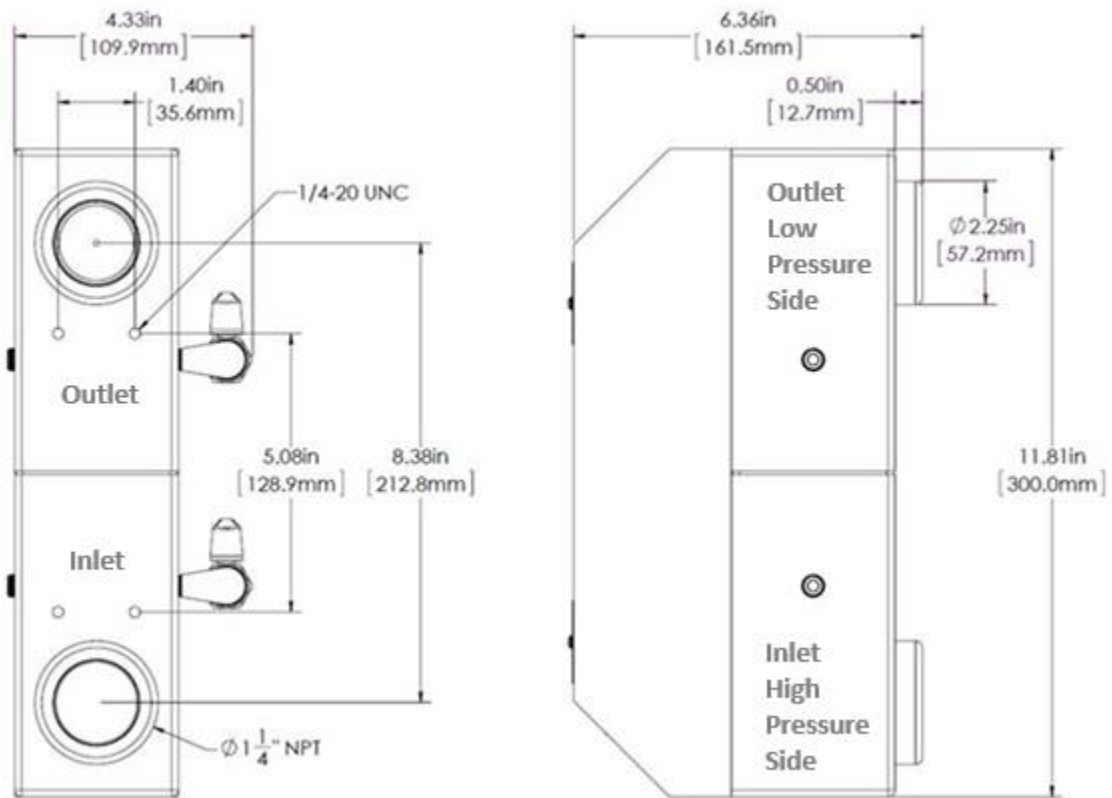
Touchscreen model:

1. **Zero Tare** (Resets the zero flow rate of the meter)
  - a. With the meter in manual mode and supply gas/liquid pressure applied to the meter, drive the valve completely closed.
  - b. From the main screen, enter the setup menu  and push the zero tare  button.
  - c. This will zero the meter and the flow should adjust to zero accordingly.
2. **Max Tare** (Sets the max position the valve can drive to in valve position mode)
  - a. With the meter in manual mode and supply gas/liquid pressure applied to the meter, drive the valve open to the desired max flow rate.
  - b. From the main screen, enter the setup menu  and push the max tare  button.
  - c. This will set the current position of the valve to be the maximum position allowed during normal operation.
3. **Altitude Compensation**
  - a. From the main screen, enter the Setup menu  and Instrument Configuration - Additional Options menu .
  - b. Enter the actual altitude for the installed location.
  - c. Press Select to save.

### Appendix 4 – Additional Visuals and Diagrams



Fittings location and dimensions:



Connections:

